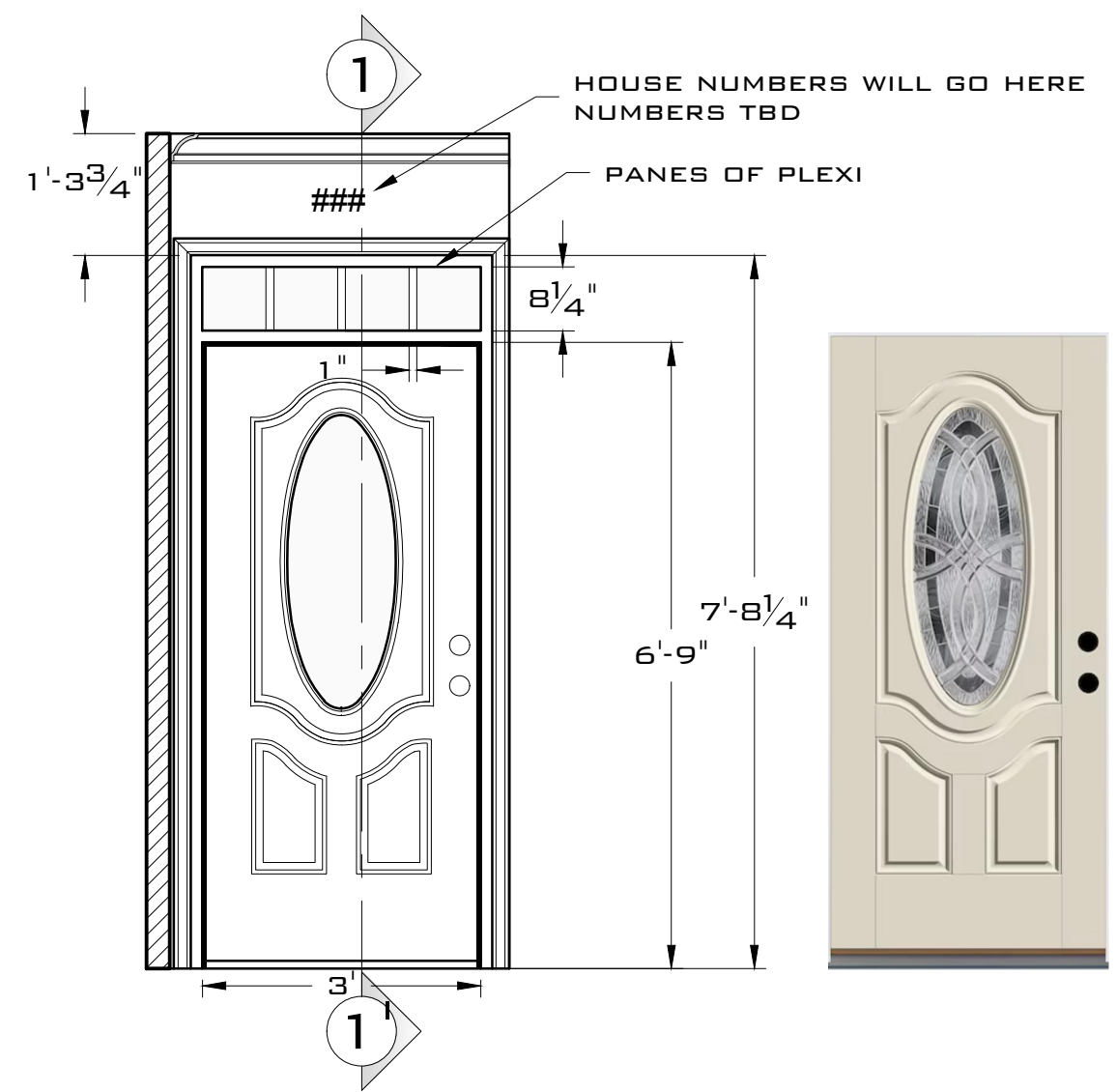


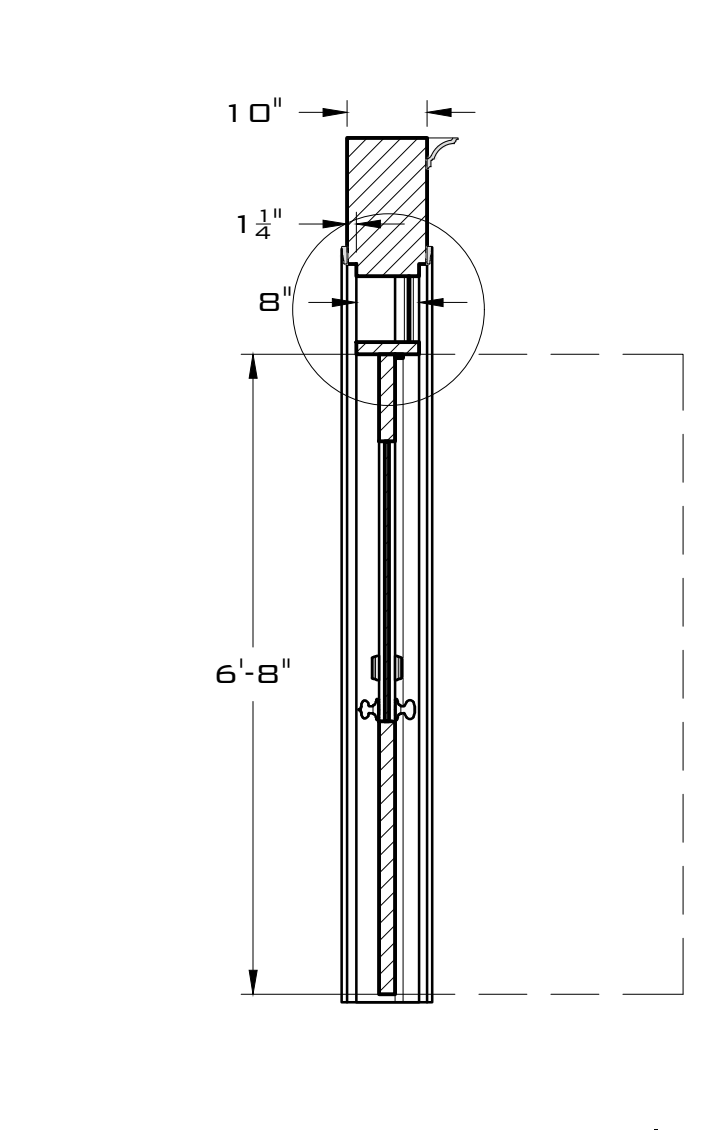
GENERAL NOTES

- BOTH DOOR FLATS WILL NEED TO BE REINFORCED TO HAVE THEIR DOORS SLAMMED.
- THERE IS A TOE RAIL THAT FOLLOWS THE LIP OF THE STAGE. THIS IS TO PREVENT MARBLES FROM ROLLING OFF. EXACT WIDTH AND HEIGHT TBD
- KITCHEN SINK AND STOVETOP/OVEN ARE NON-FUNCTIONING.
- REFRIGERATOR DOES NOT NEED TO REFRIGERATE, BUT WILL NEED A FUNCTIONING LIGHT WHEN OPENED.
- OVEN AND REFRIGERATOR ARE MODERN STAINLESS STEEL APPLIANCES IF POSSIBLE.
- KITCHEN NEEDS AT LEAST ONE FUNCTIONING UPPER AND LOWER CABINET AND ONE FUNCTIONING DRAWER, WHICH ARE TBD WITH DIR.

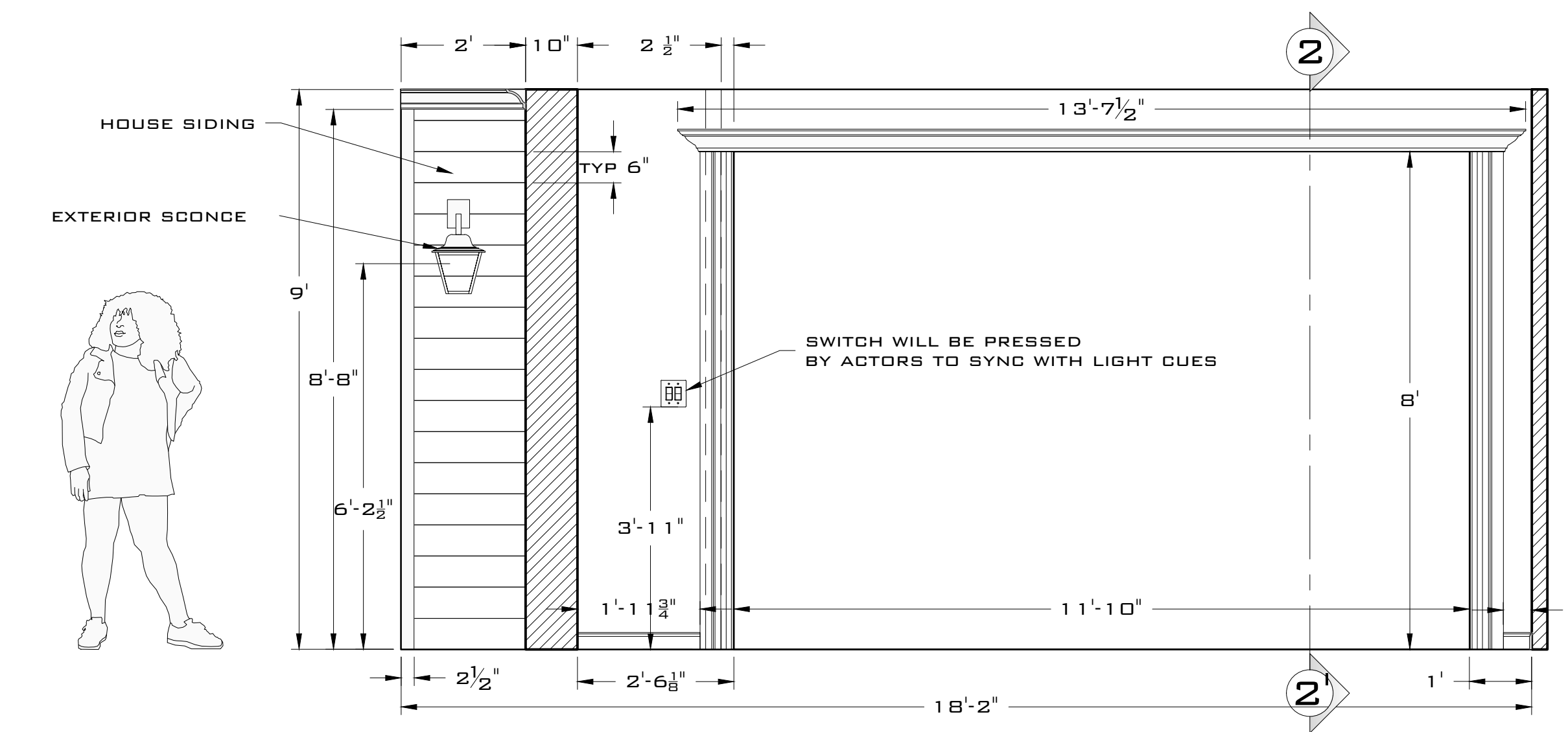
MAGICAL THINKING		
BRISTOL VALLEY THEATER		
DIRECTOR: SUZI TAKAHASHI	DESIGNER: RYAN DZIEDZIECH	
PAGE 1	GP/SEC	OF 3
SCALE: 0'-1/2" = 1'-0"		TD: TBA
DATE: 4/15/23		RYANDZIEDZIECH@GMAIL.COM
REV: MM/DD/YY		917-B17-3890
FINAL: MM/DD/YY		



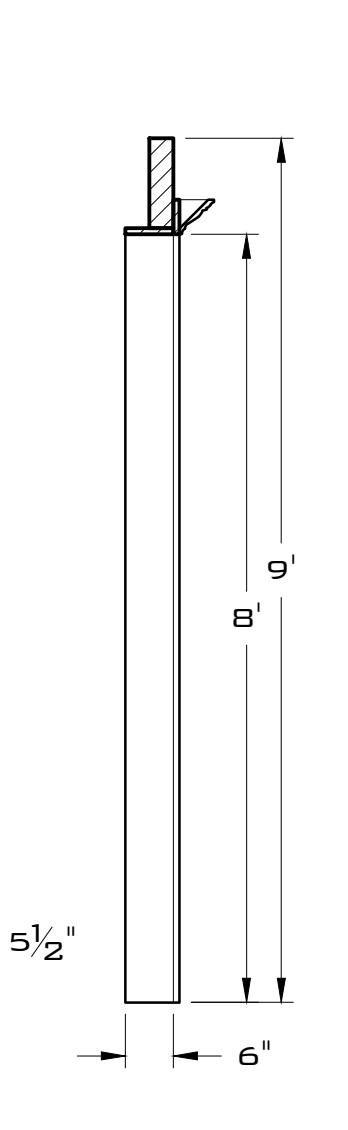
WALL A ELEVATION
SCALE: 0'-1/2" = 1'-0"



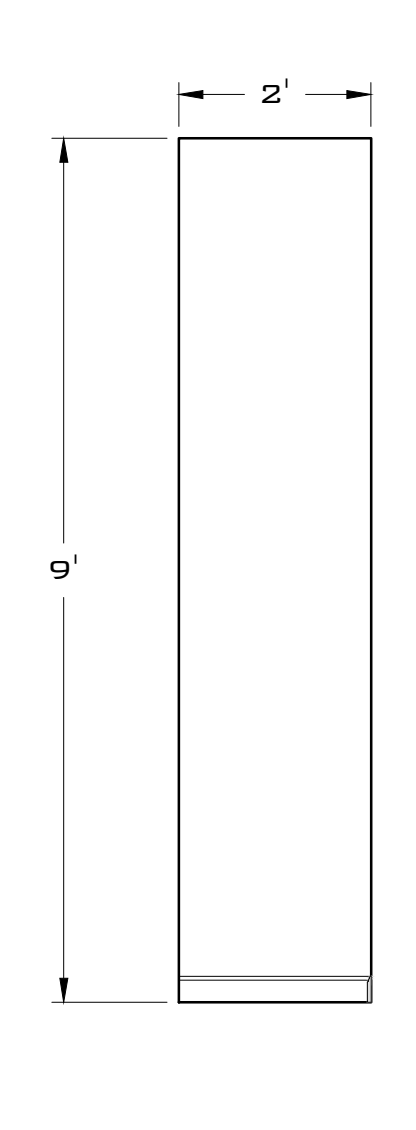
DOOR RESEARCH
NOT TO SCALE



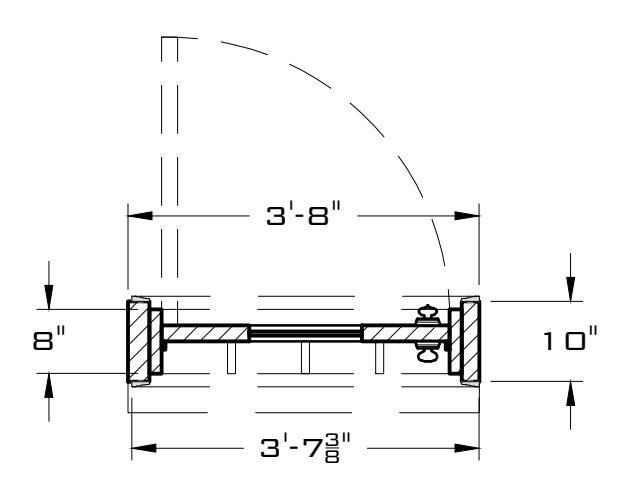
WALL B ELEVATION
SCALE: 0'-1/2" = 1'-0"



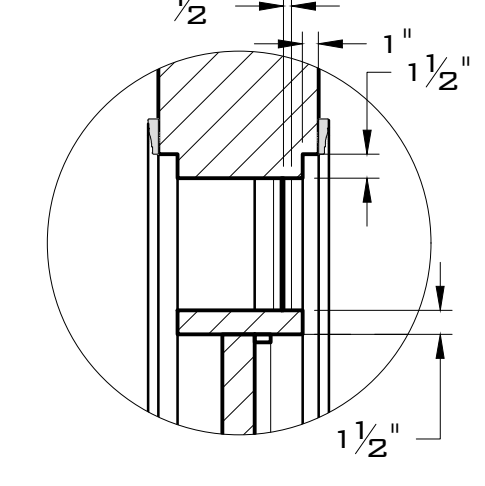
SEC 2-2
SCALE: 0'-1/2" = 1'-0"



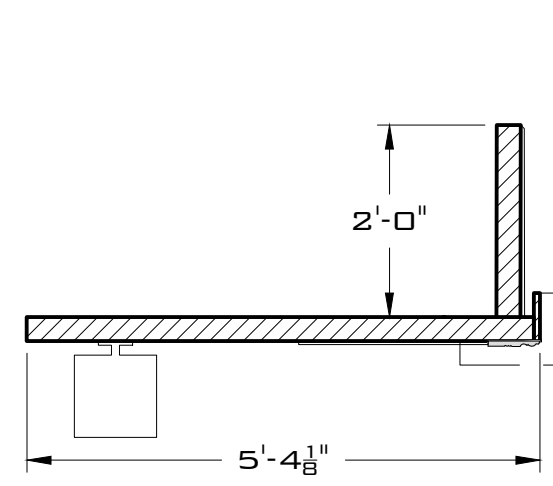
WALL C ELEVATION
SCALE: 0'-1/2" = 1'-0"



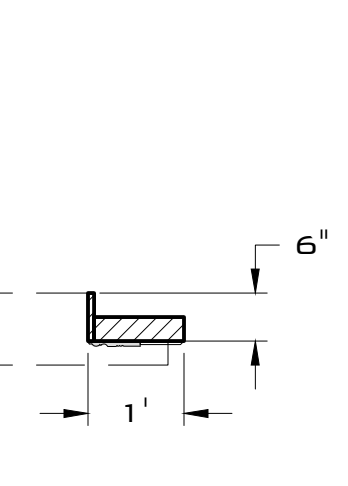
WALL A PLAN
SCALE: 0'-1/2" = 1'-0"



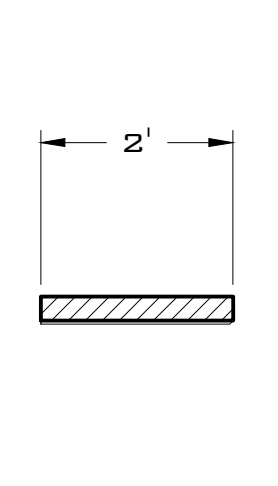
DETAIL 1
SCALE: 0'-1" = 1'-0"



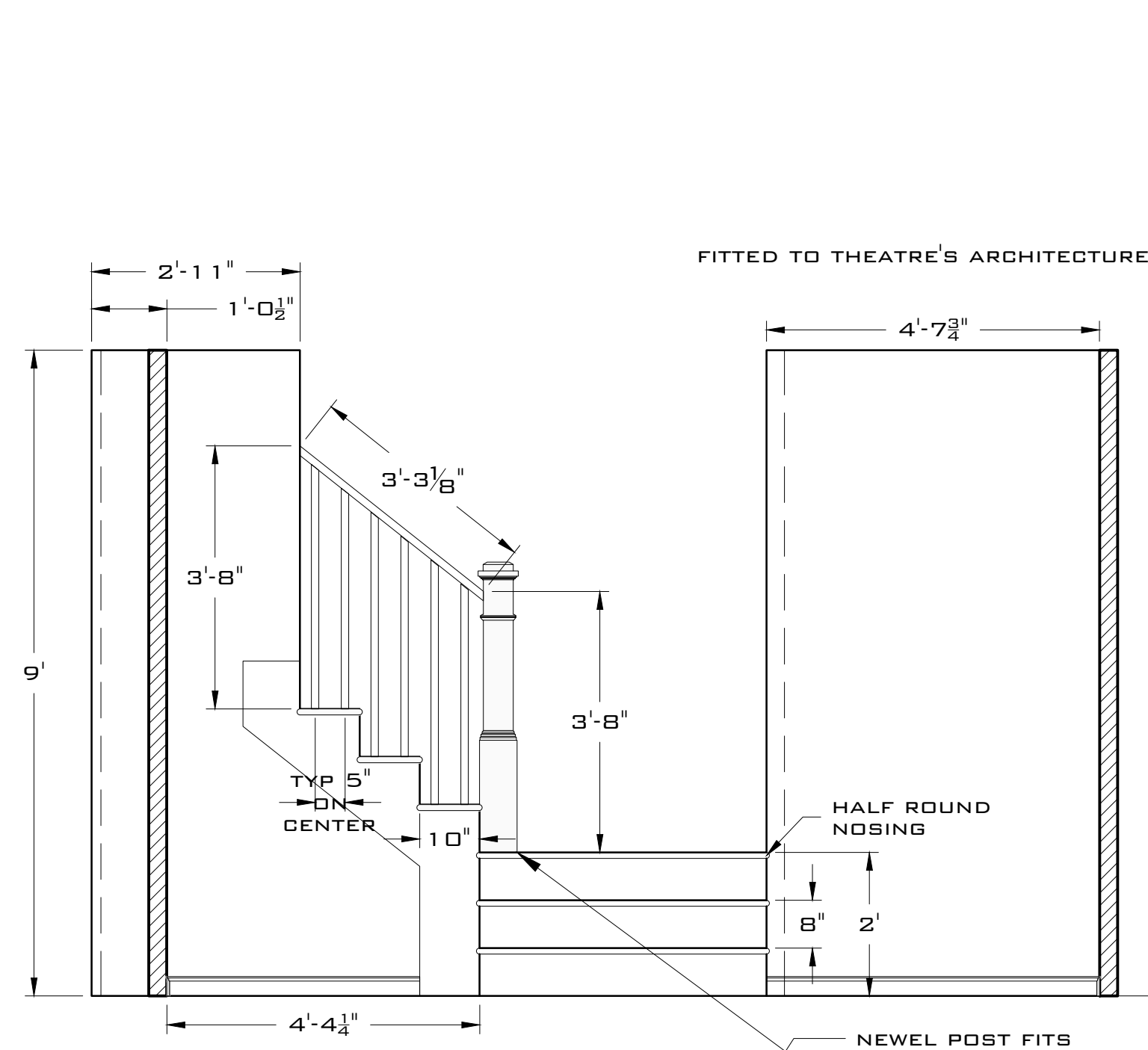
WALL B PLANS
SCALE: 0'-1/2" = 1'-0"



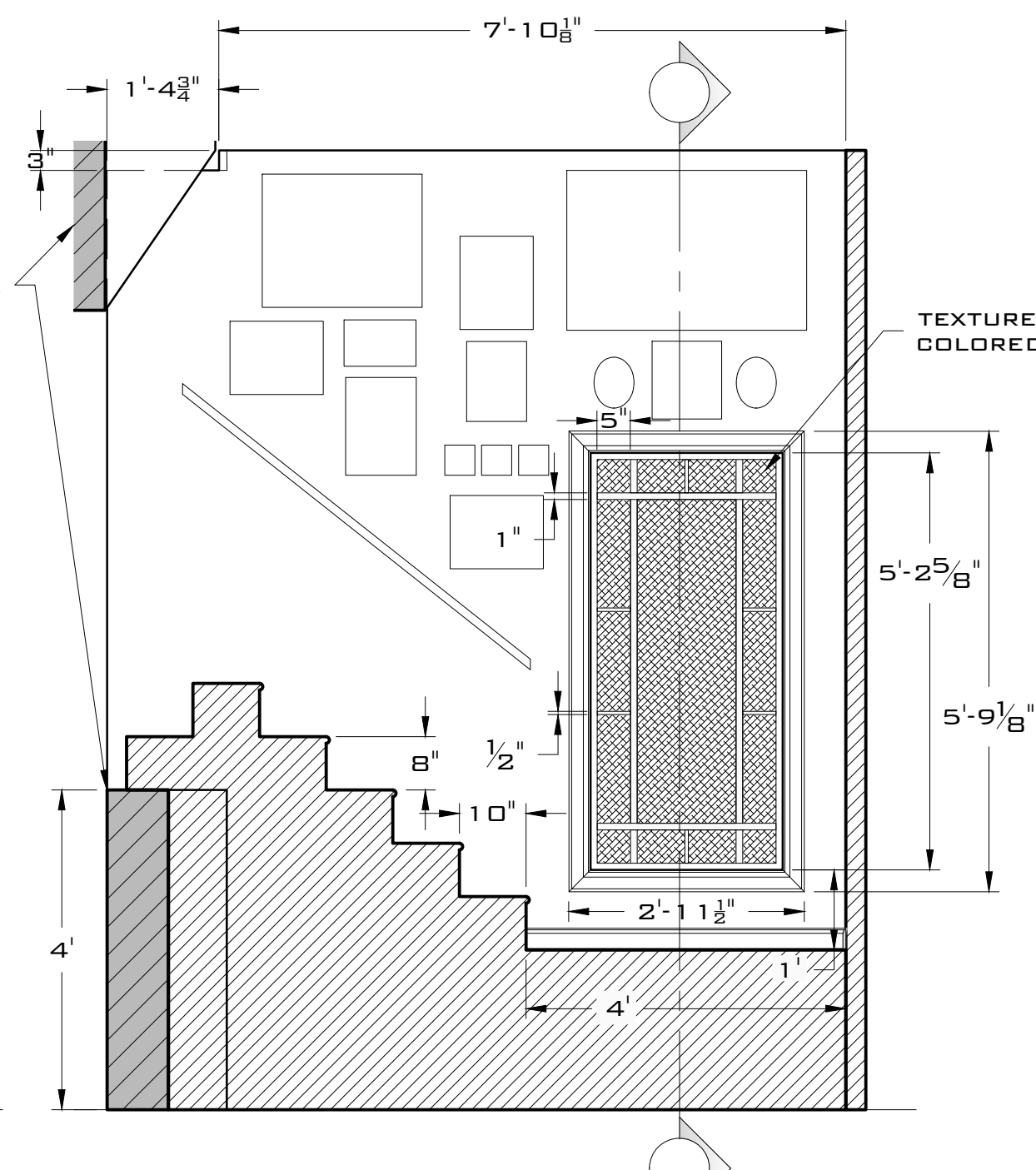
DETAIL 2
SCALE: 0'-1" = 1'-0"



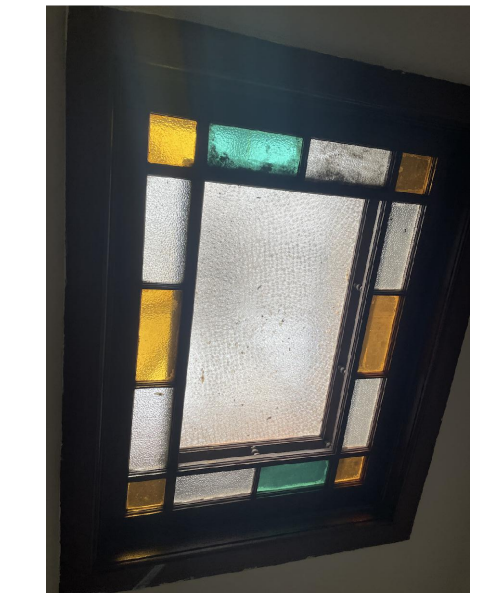
WALL C PLAN
SCALE: 0'-1/2" = 1'-0"



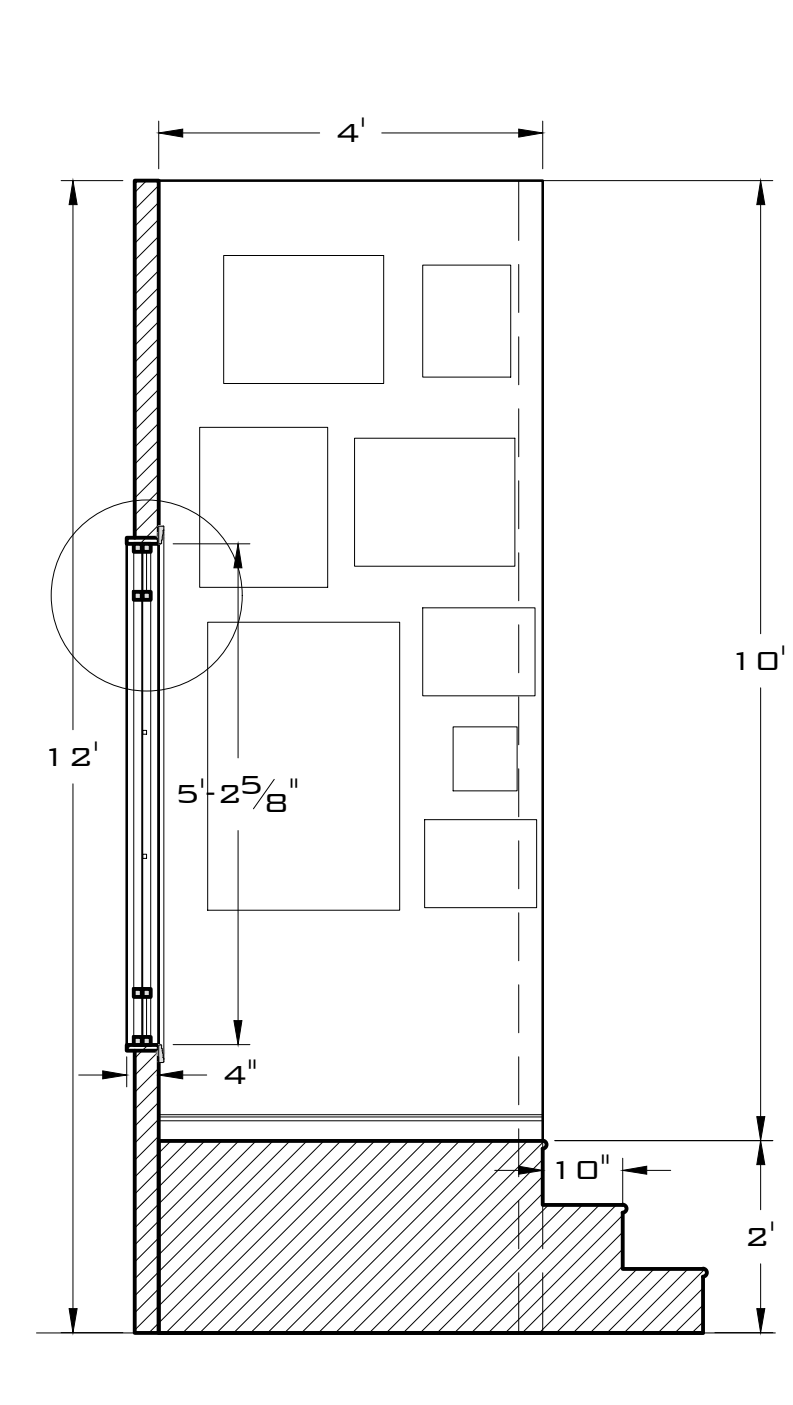
WALL D ELEVATION
SCALE: 0'-1/2" = 1'-0"



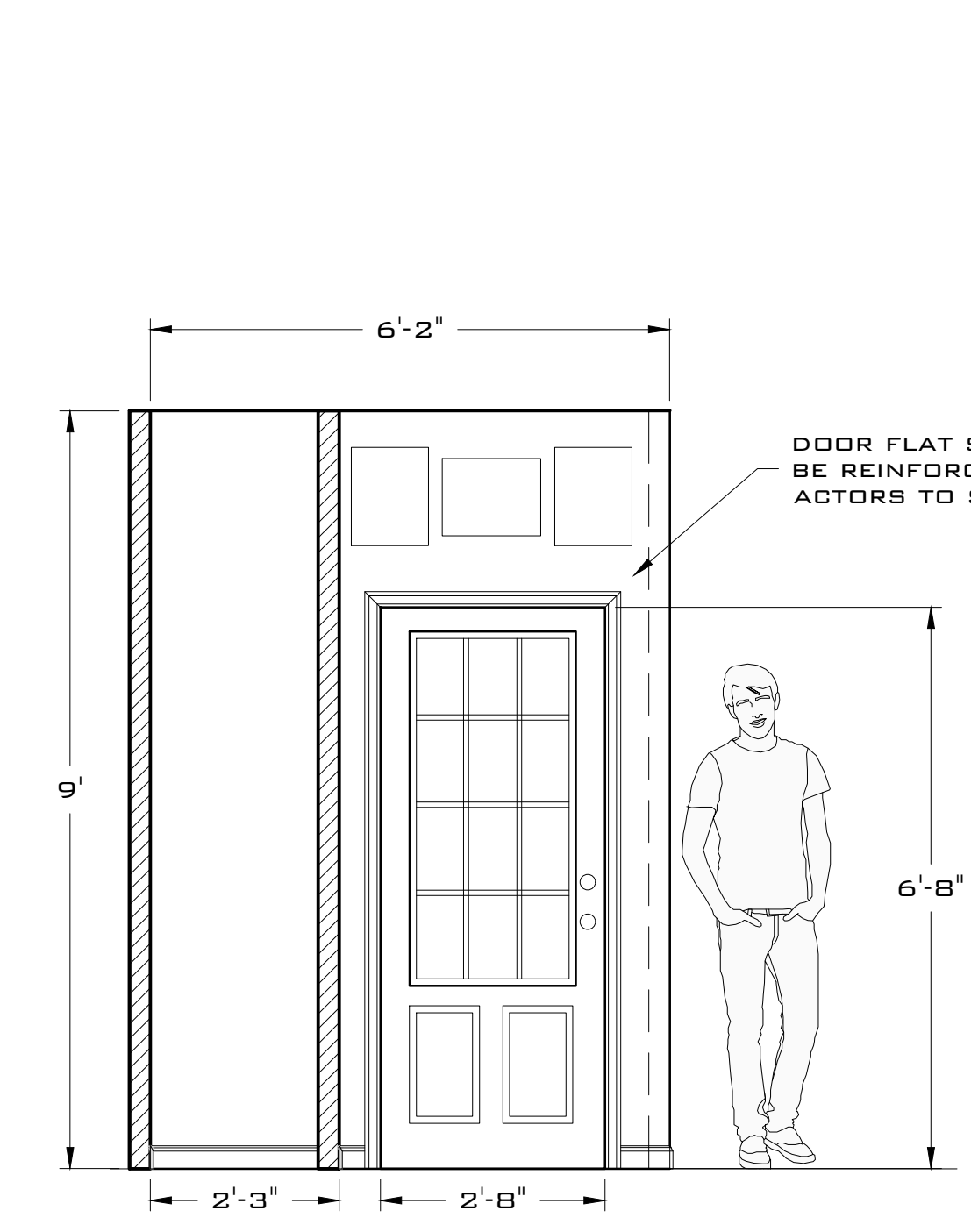
WALL E ELEVATION
SCALE: 0'-1/2" = 1'-0"



WINDOW RESEARCH
NO SCALE

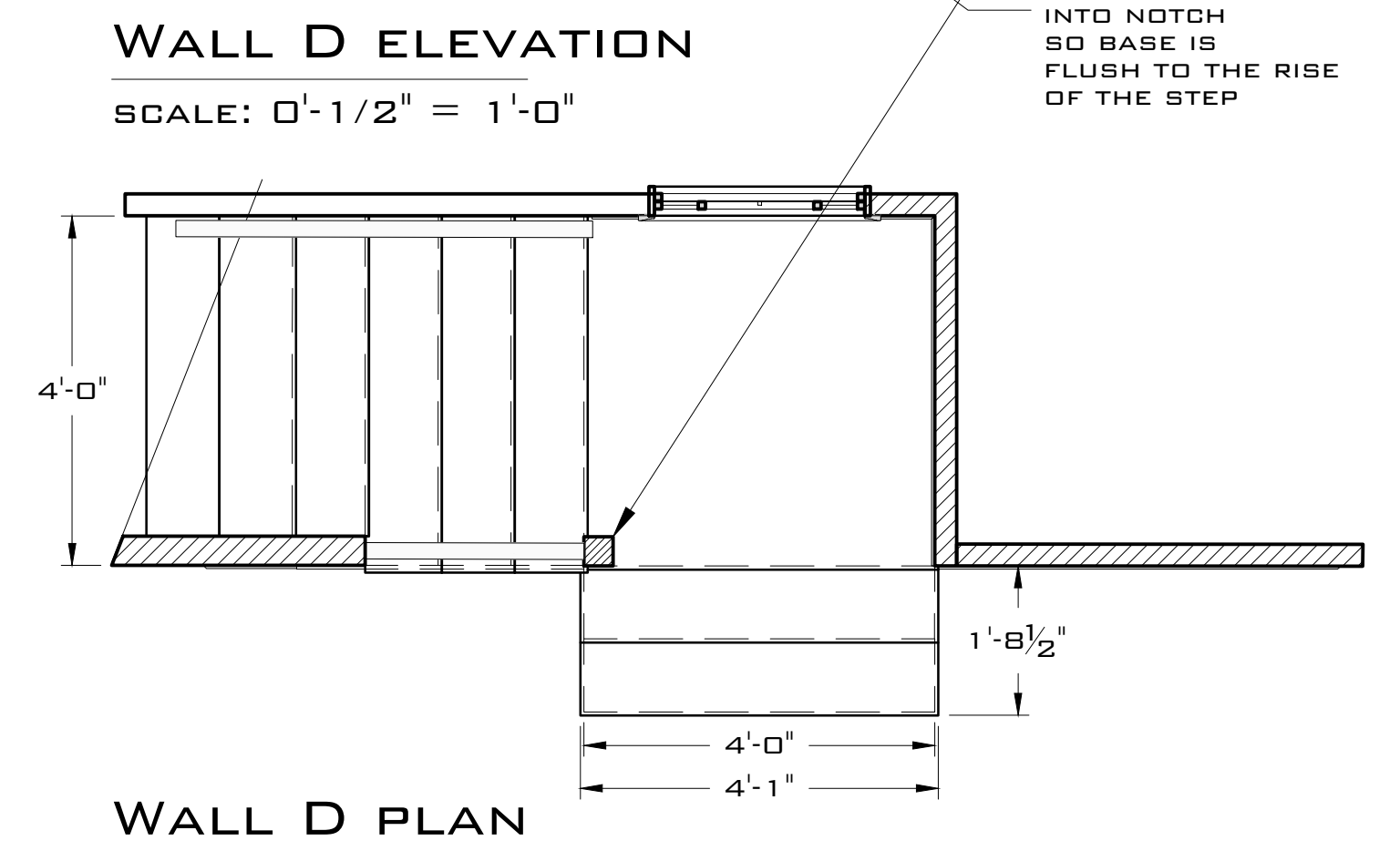


WALL F ELEVATION
SCALE: 0'-1/2" = 1'-0"

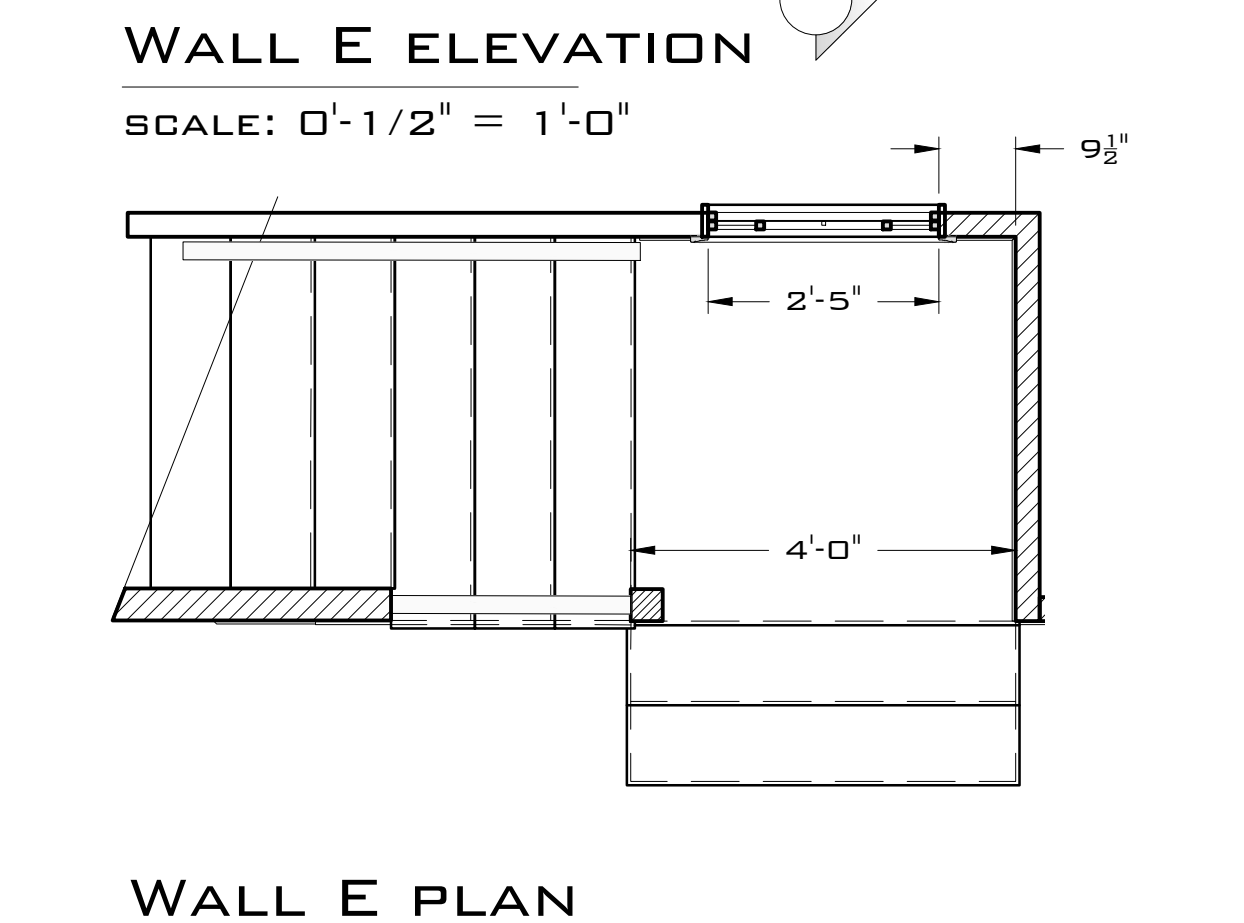


WALL G ELEVATION
SCALE: 0'-1/2" = 1'-0"

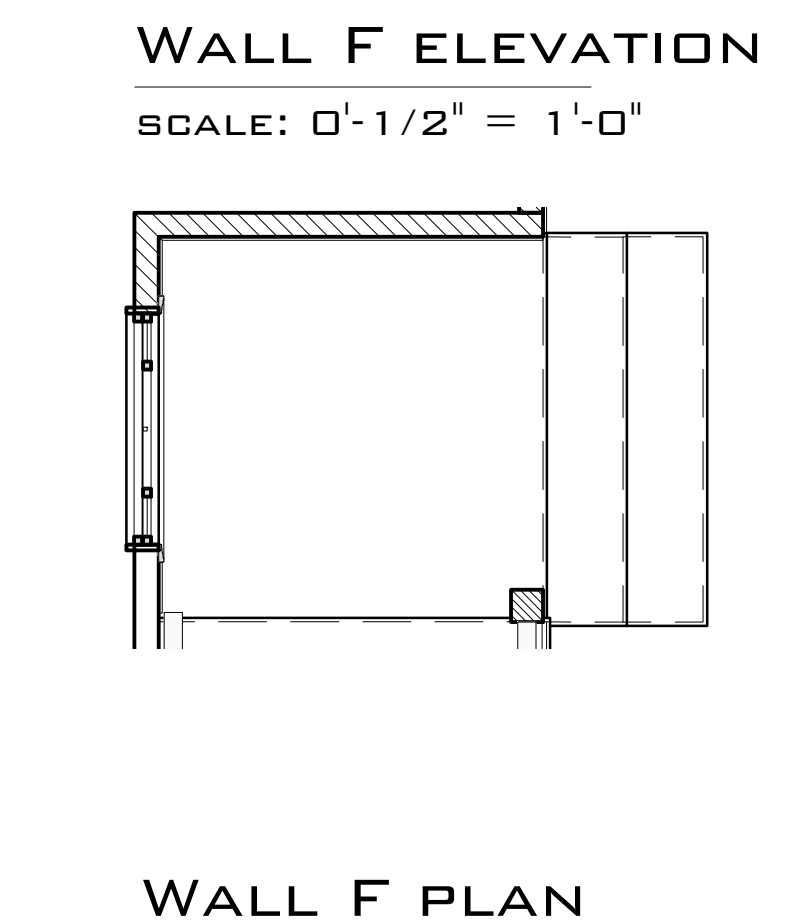
GENERAL NOTES
-STAIRCASE AND SURROUNDING FLATS ARE BUILT TO FIT INTO THE BELL TOWER THAT IS PART OF THEATER'S ARCHITECTURE
-DOOR FLATS MUST BE REINFORCED TO BE SLAMMED BY ACTORS
-ANTICIPATE MANY FRAMED OBJECTS HANGING ON THE WALLS



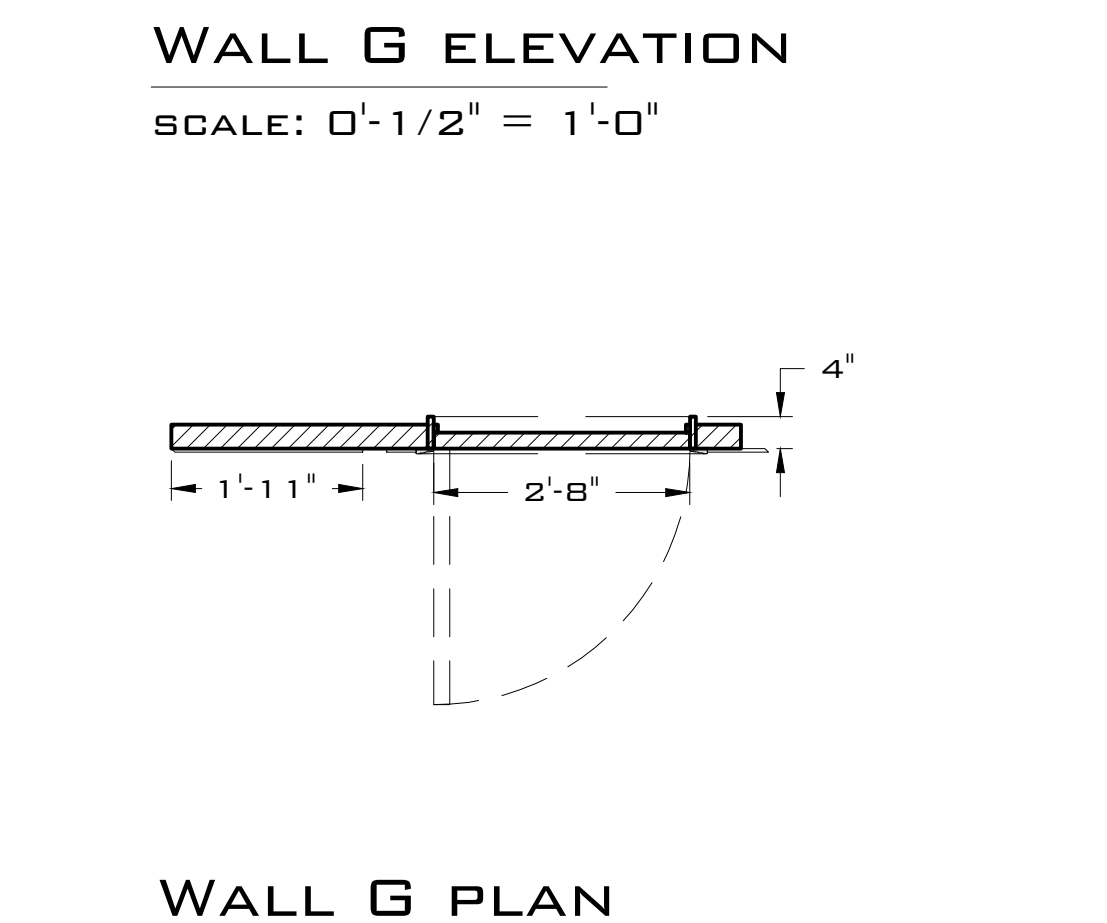
WALL D PLAN
SCALE: 0'-1/2" = 1'-0"



WALL E PLAN
SCALE: 0'-1/2" = 1'-0"

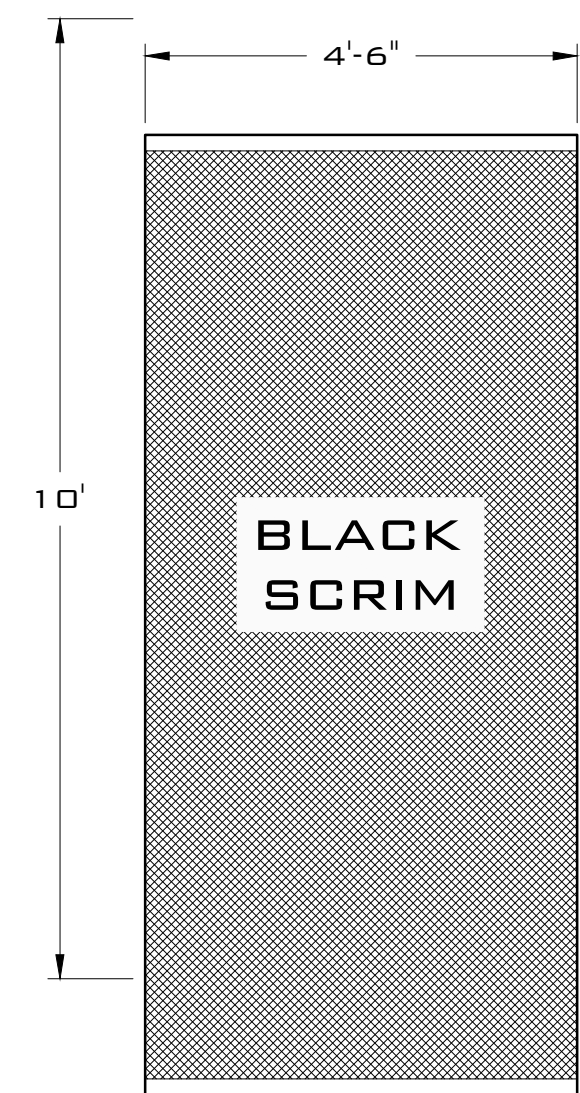


WALL F PLAN
SCALE: 0'-1/2" = 1'-0"



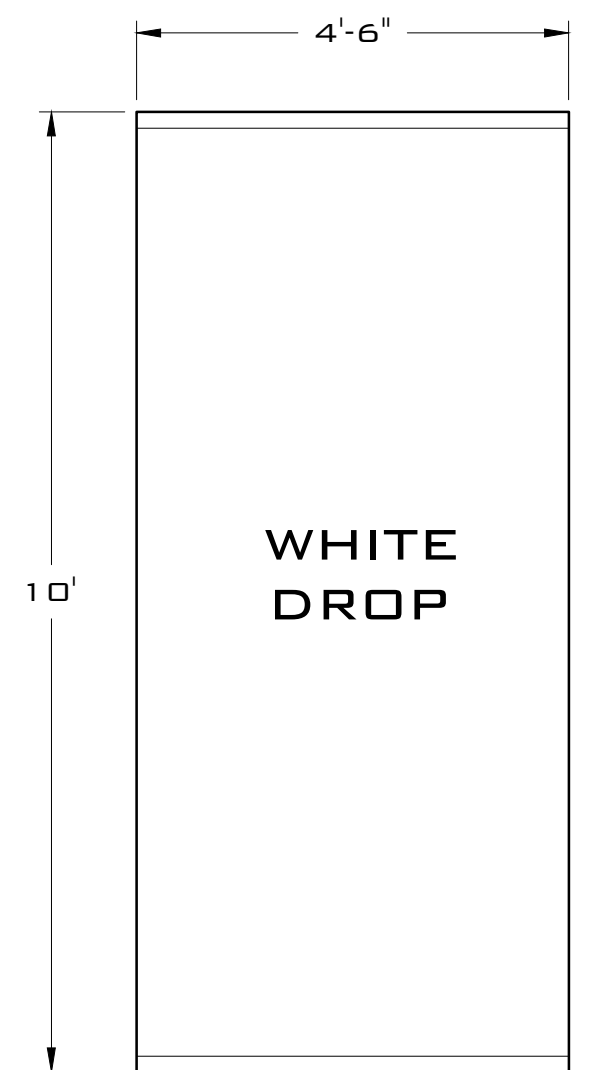
WALL G PLAN
SCALE: 0'-1/2" = 1'-0"

MAGICAL THINKING		
BRISTOL VALLEY THEATER		
DIRECTOR: SUZI TAKAHASHI	DESIGNER: RYAN DZIEDZIECH	
PAGE 2	ELEVATIONS	OF 3
SCALE: 0'-1/2" = 1'-0"	TD: TBA	
DATE: 4/15/23	RYANDZIEDZIECH@GMAIL.COM	
REV: MM/DD/YY	917-817-3890	
FINAL: MM/DD/YY		



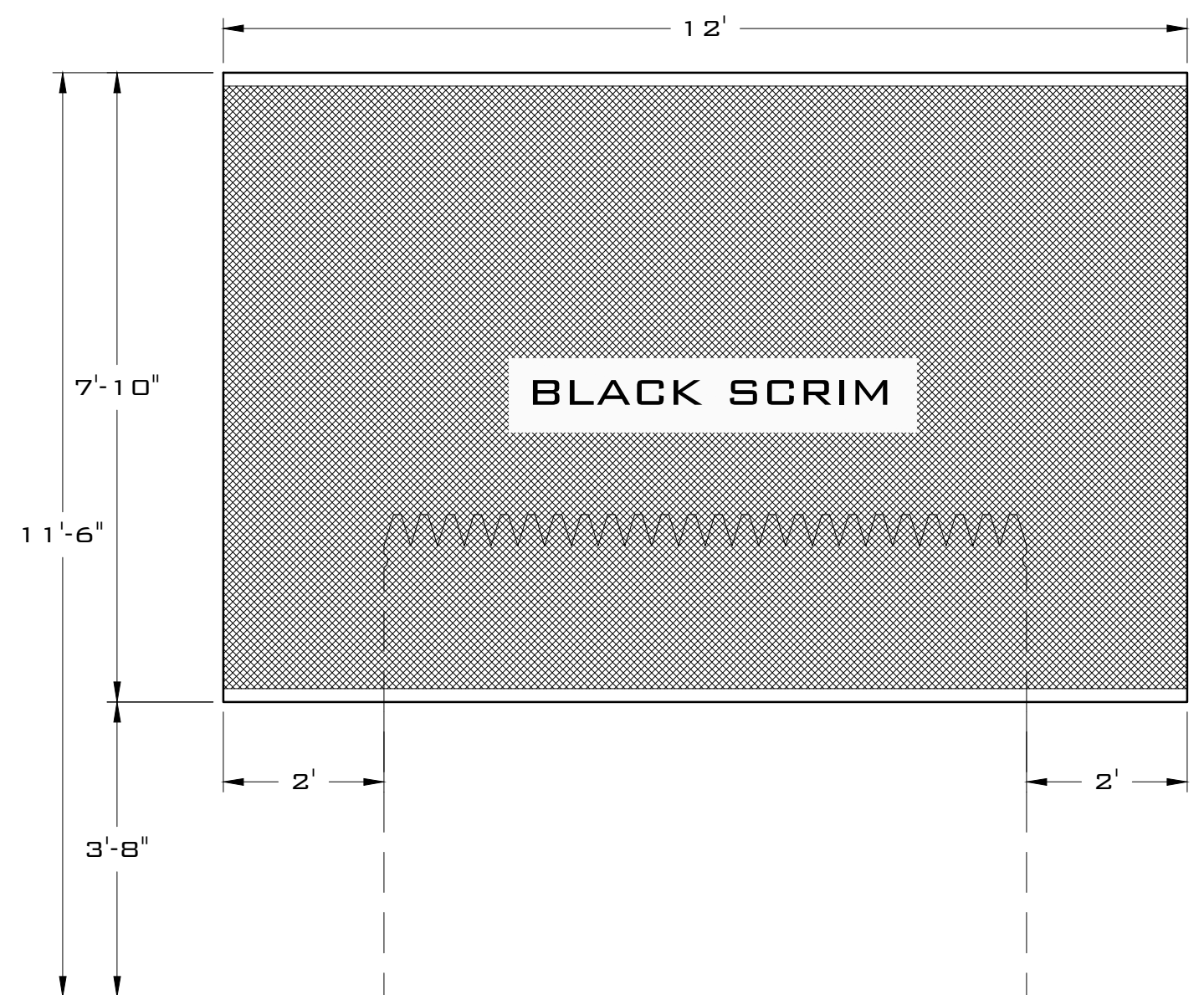
SCRIM 1 ELEVATION

SCALE: 0'-1/2" = 1'-0"



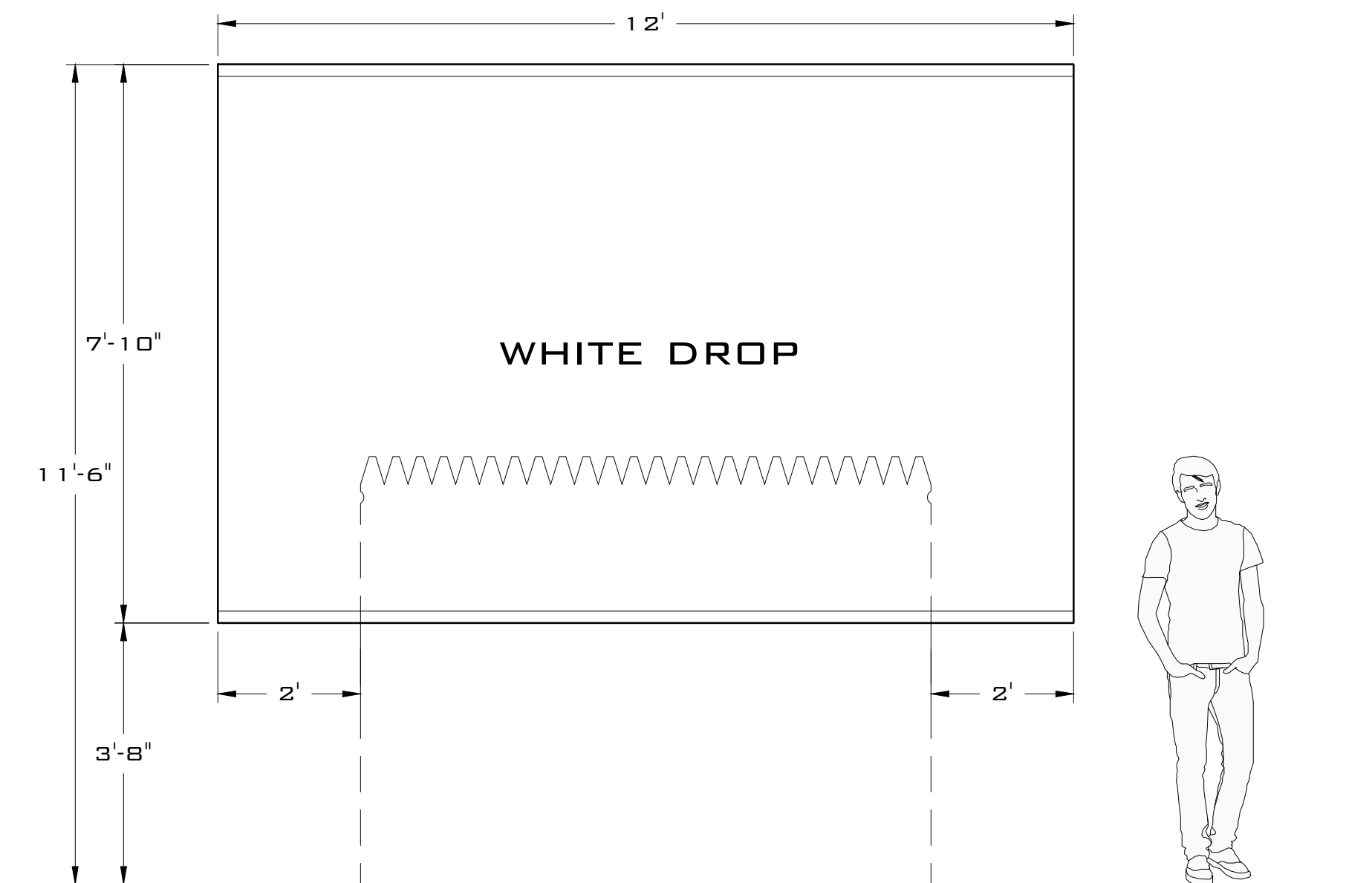
DROP 1 ELEVATION

SCALE: 0'-1/2" = 1'-0"



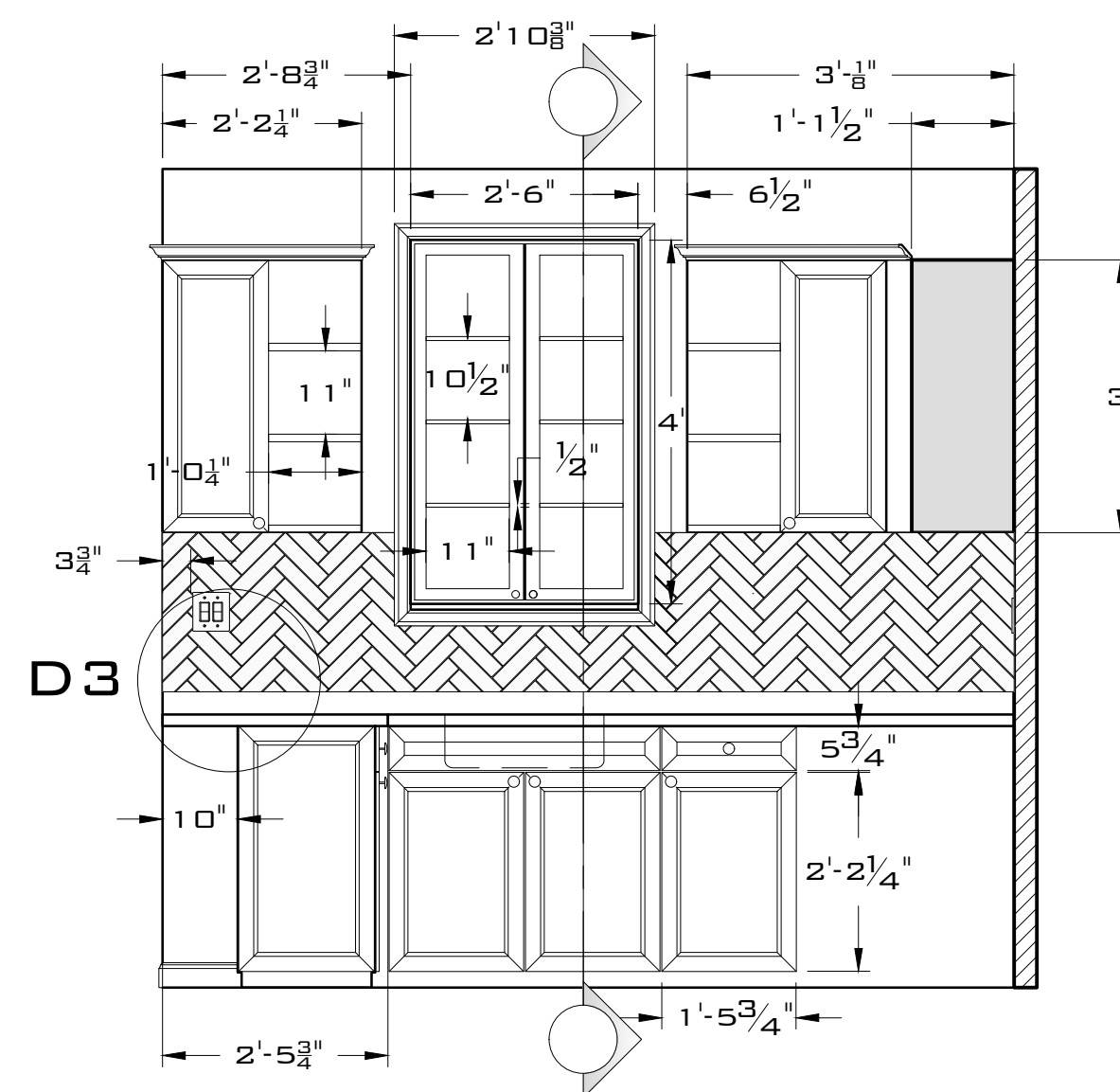
SCRIM 2 ELEVATION

SCALE: 0'-1/2" = 1'-0"



SCRIM 2 ELEVATION

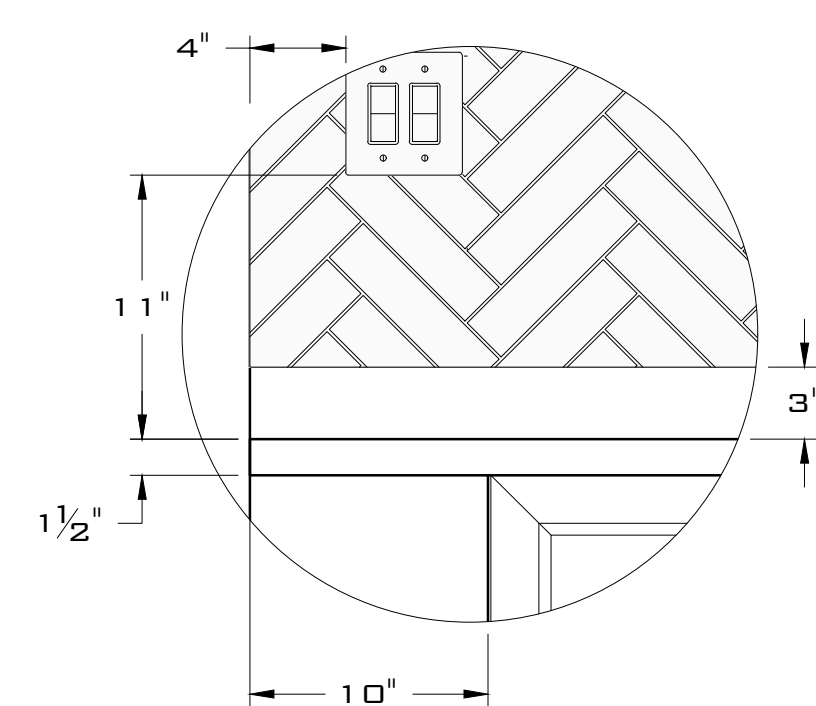
SCALE: 0'-1/2" = 1'-0"



WALL H ELEVATION

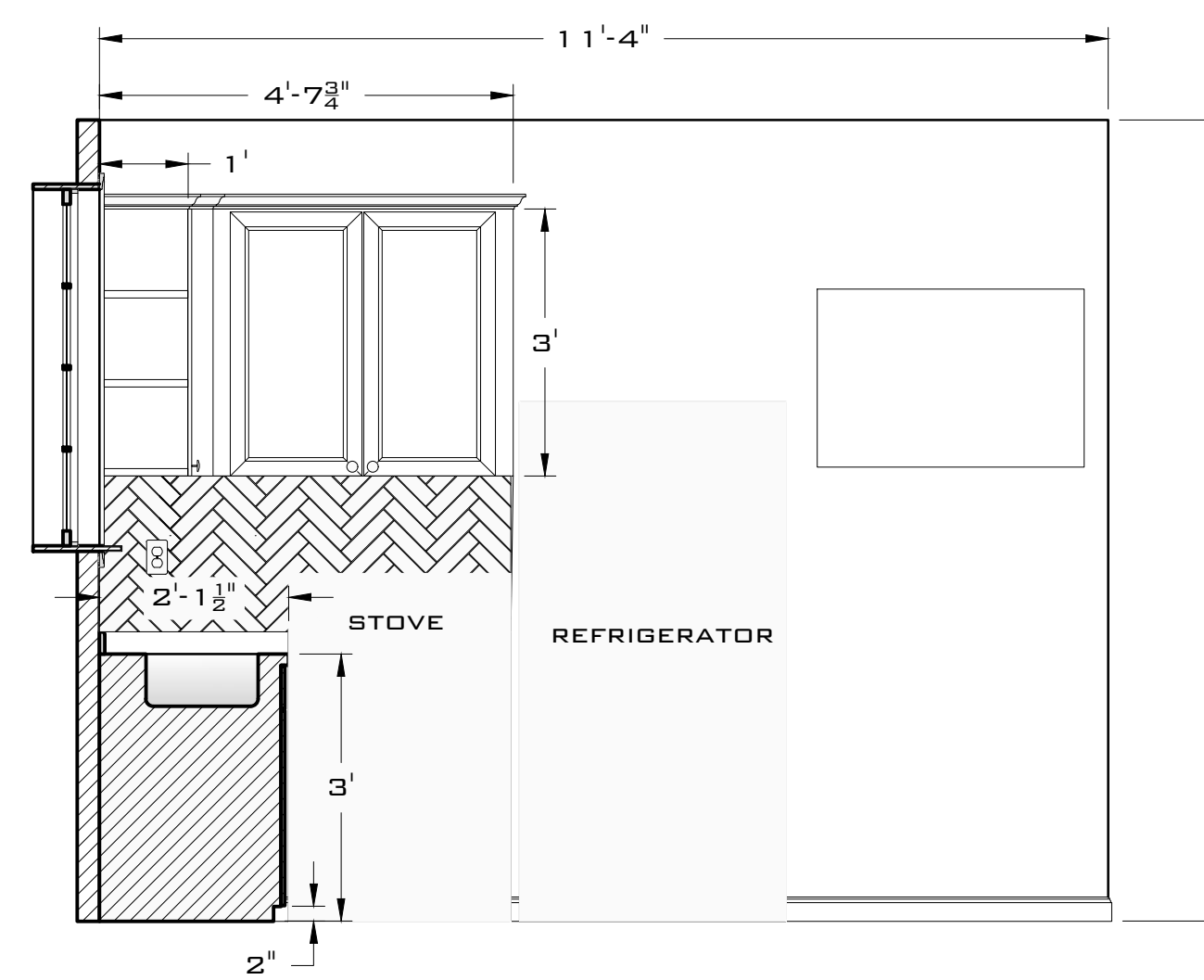
SCALE: 0'-1/2" = 1'-0"

TILES ARE 2"X8" RIPPED MASONITE WITH AN 1/8" GAP IN BETWEEN. GROUT WITH JOINT-COMPOUND



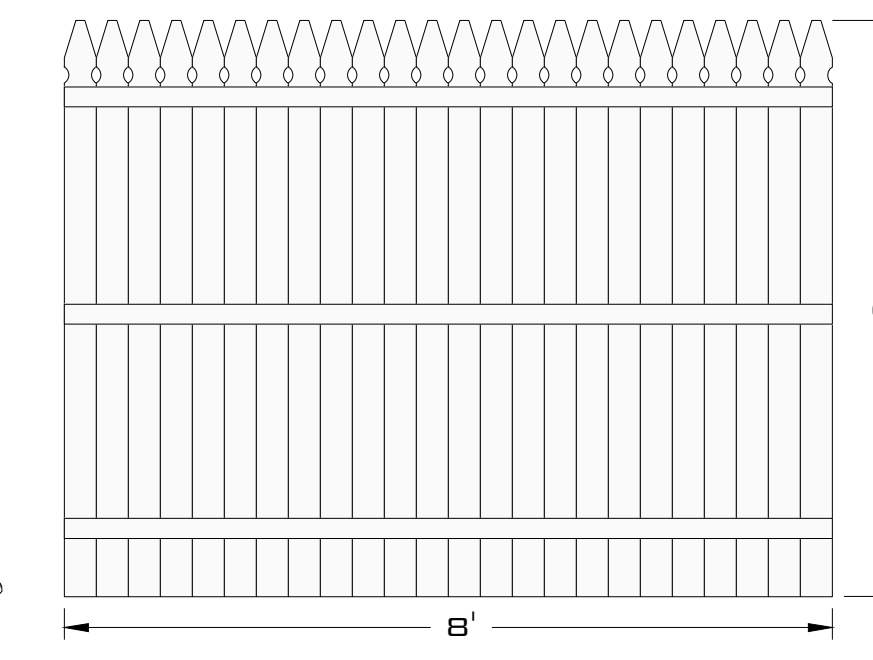
DETAIL 3

SCALE: 0'-1 1/2" = 1'-0"



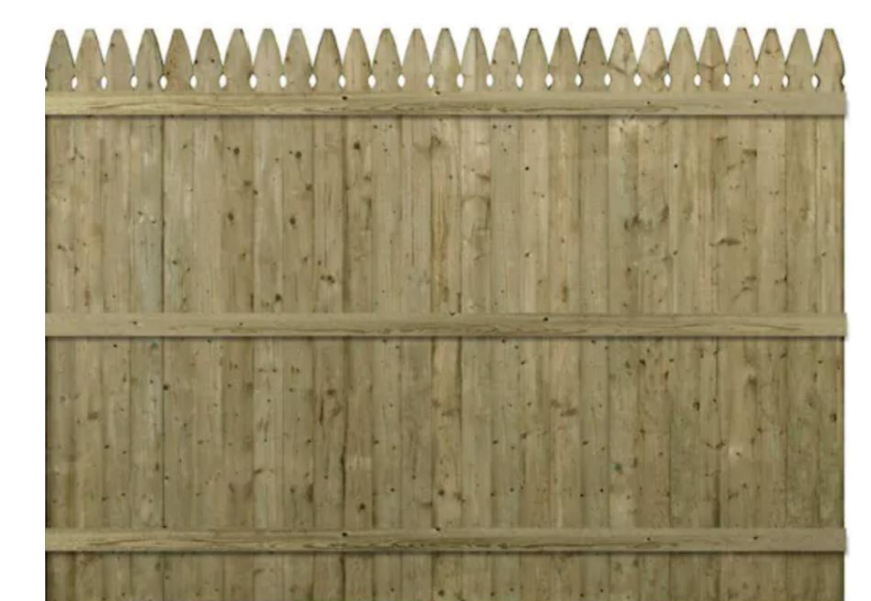
WALL J ELEVATION

SCALE: 0'-1/2" = 1'-0"



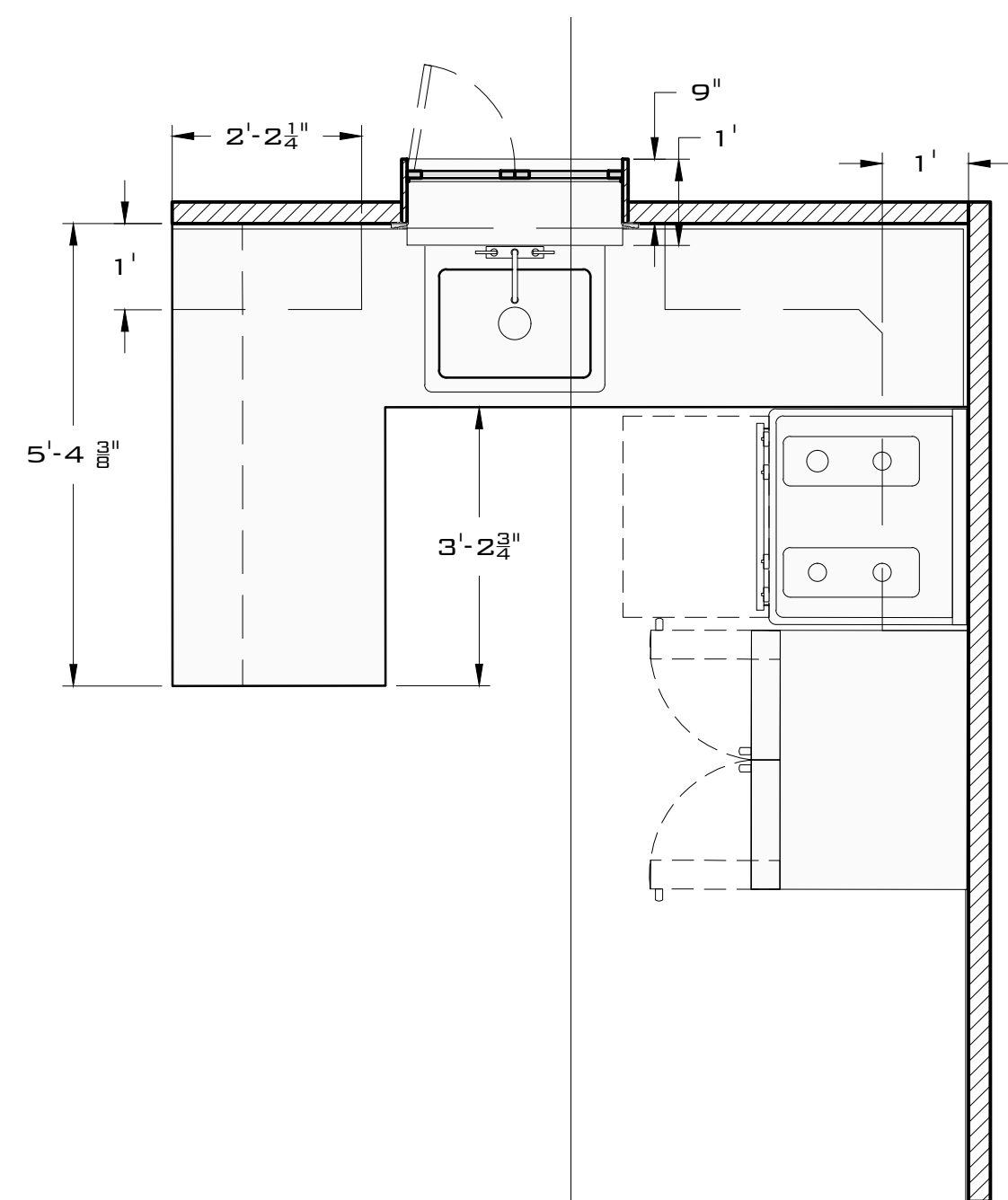
FENCE ELEVATION

SCALE: 0'-1/2" = 1'-0"



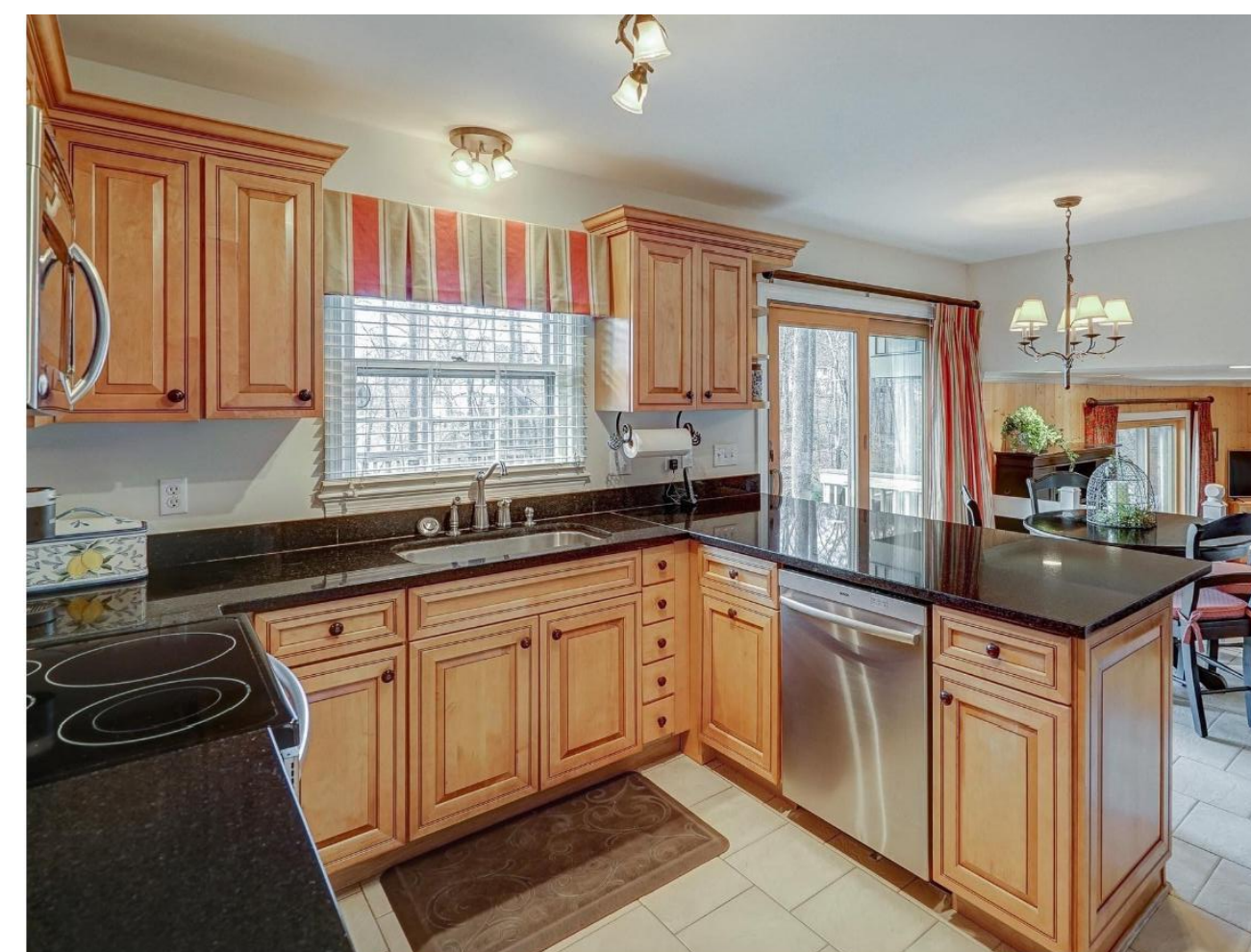
FENCE RESEARCH

NOT TO SCALE



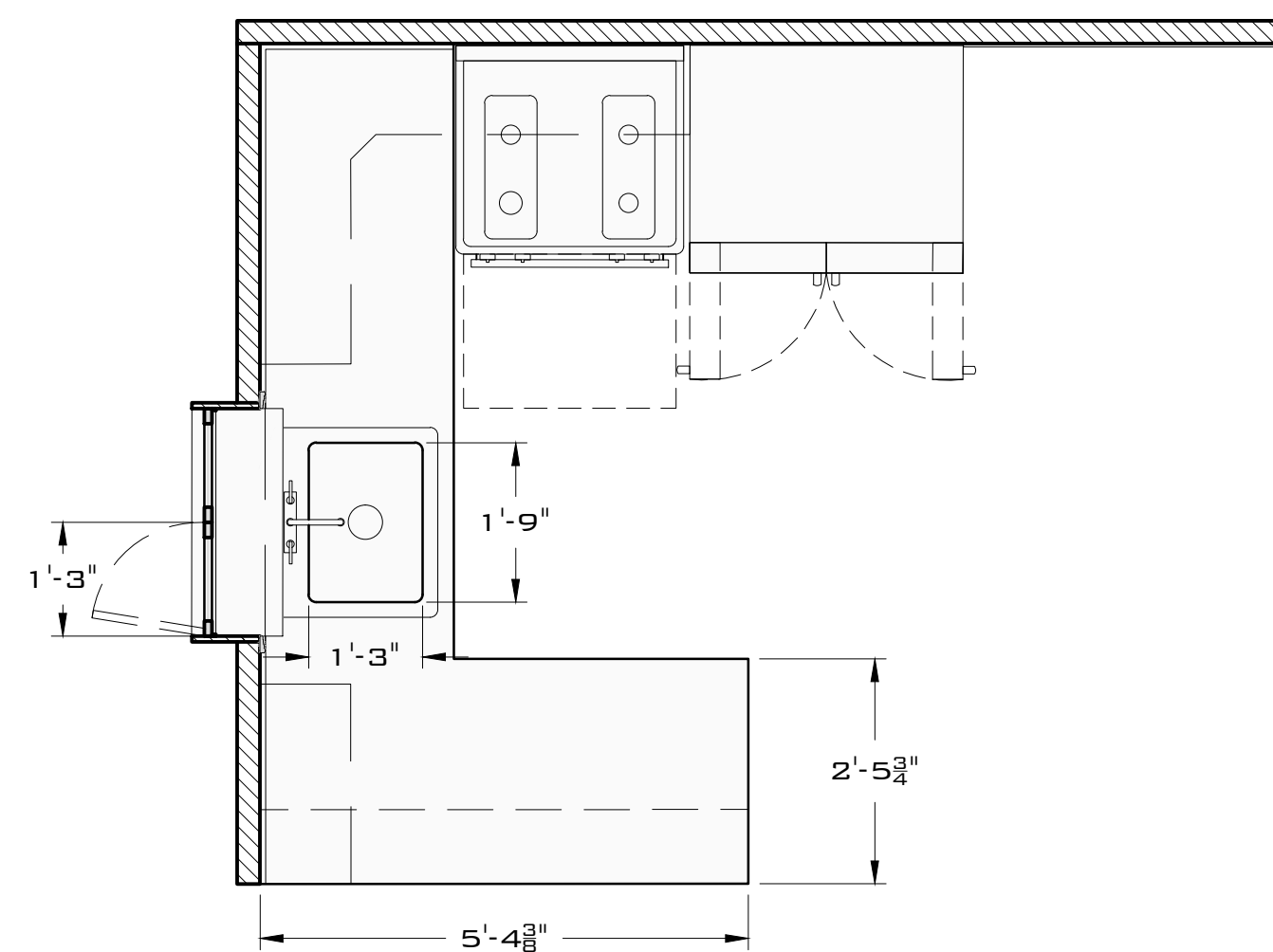
WALL H PLAN

SCALE: 0'-1/2" = 1'-0"



KITCHEN RESEARCH

NO SCALE



WALL J PLAN

SCALE: 0'-1/2" = 1'-0"

GENERAL NOTES:

- OVEN & FRIDGE ARE MODERN STAINLESS STEEL APPLIANCES IDEALLY
- STOVE AND SINK ARE NON-FUNCTIONING
- FRIDGE MUST HAVE A LIGHT TURN ON/OFF WHEN OPEN/CLOSED
- NEED MINIMUM OF 1 UPPER CABINET, 1 LOWER CABINET, AND 1 DRAWER TO FUNCTION WHICH ONES TBD WITH DIR
- WINDOW MUST BE ABLE TO OPEN

MAGICAL THINKING			
BRISTOL VALLEY THEATER			
DIRECTOR: SUZI TAKAHASHI		DESIGNER: RYAN DZIEDZIECH	
PAGE	ELEVATIONS		OF
3			3
SCALE: 0'-1/2" = 1'-0"			TD: TBA
DATE: 4/15/23		RYANDZIEDZIECH@GMAIL.COM	
REV: MM/DD/YY			
FINAL: MM/DD/YY		917-817-3890	